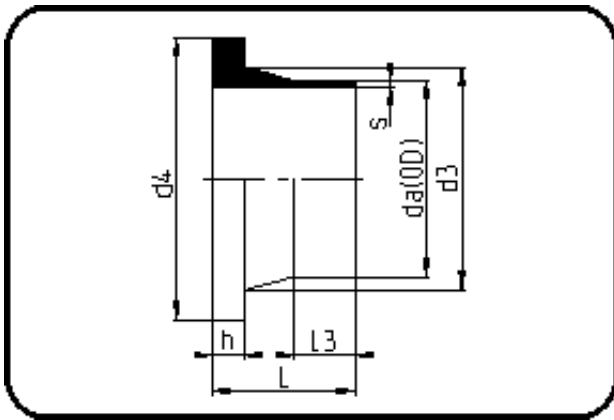


Fittings with short Spigot



Code: 012.1

- Stub Flange ANSI
- short spigot
- injection moulded
- **Butt-welding**
- **PE 100-RC black**

Backing Rings please see Accessories.

Dimension	Code	Detail	Weight
450	70.012.1450.11	450X40,9 SDR11 ISO S-5 18"	14.20

	Unit	Nominale	Tol+	Tol-
da(OD)	mm	450	4.10	0.00
L	mm	166	4.00	0.00
L3	mm	63	3.00	0.00
s	mm	40,9	4.20	0.00
d3	mm	468	0.00	1.50
h	mm	60	1.00	0.00
d4	mm	545	0.00	2.25
da	inch	18	0.00	0.00