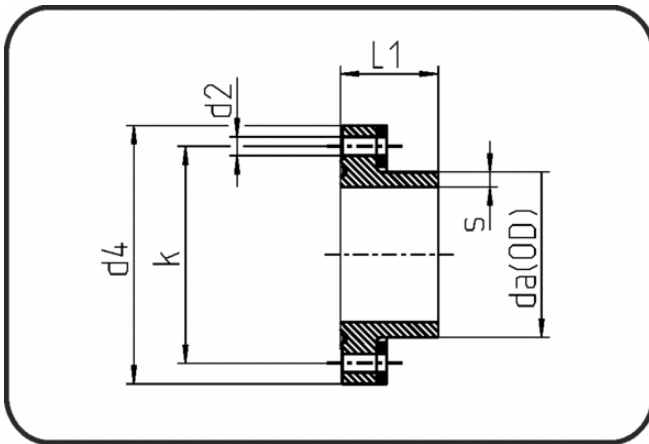


Fittings with short Spigot



Code: 362

- **Special Flange DIN short**
- hot-dip galvan. backing ring
and EPDM O-ring
- machined/drilled PN10/16
- **Butt-welding**
- **PE 100-RC black**

Dimension	Code	Detail	da(OD) mm	s mm	L mm	d2 mm	k mm	d4 mm	Weight
160/DN125	70.362.0160.17	160X9,5 SDR17 / DN125	160	9,5	95	18	210	250	3.29
180/DN125	70.362.0180.17	180X10,7 SDR17 / DN125	180	10,7	100	18	210	250	2.95
200/DN150	70.362.0200.17	200X11,9 SDR17 / DN150	200	11,9	102	22	240	285	4.15
160/DN125	70.362.0160.11	160X14,6 SDR11 / DN125	160	14,6	95	18	210	250	3.62
180/DN125	70.362.0180.11	180X16,4 SDR11 / DN125	180	16,4	100	18	210	250	3.36
200/DN150	70.362.0200.11	200X18,2 SDR11 / DN150	200	18,2	102	22	240	285	4.62