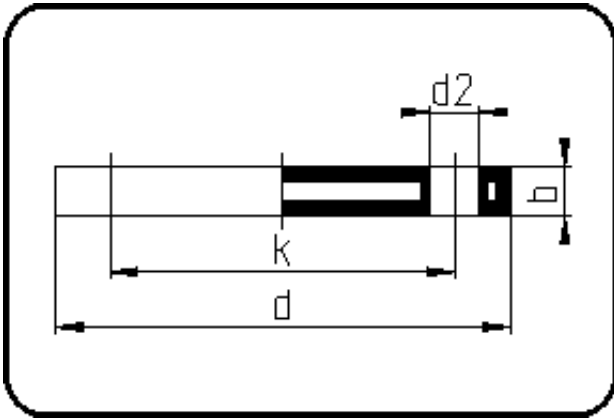


Backing Rings, Accessories



Code: 11.043

- Blind Flange ANSI
- steel insert
- injection moulded
- **Flange connection**
- **PP-FRP grey**

The torques nm[NM] specified in the technical catalogue are to be used as maximum values.

Dimension	Code	Detail	Weight
110/125	11.043.0110.11	110/125 - 4" - MOP 16 bar	2.88

	Unit	Nominale	Tol+	Tol-
da(OD)	mm	110	1.00	0.00
b	mm	18	0.75	0.75
numb	pc	8	0.00	0.00
d	mm	229	1.50	1.50
nm	[NM]	55	0.00	0.00
d2	mm	20	0.75	0.75
p	bar	16	0.00	0.00
da	inch	4	0.00	0.00
k	mm	190,5	0.75	0.75