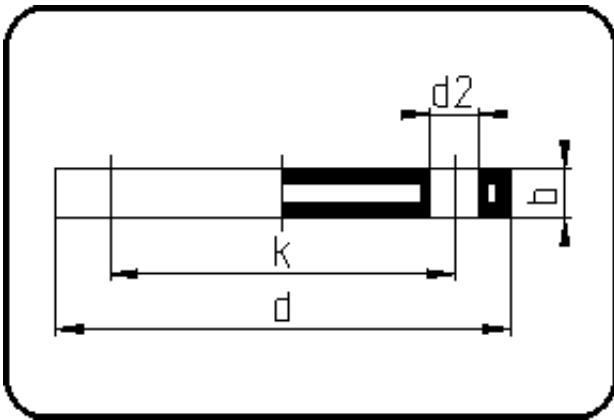


Backing Rings, Accessories



Code: 14.045

- Blind Flange DIN
- steel insert
- inj. moulded+drilled PN10/16
- **Flange connection**
- **PP-FRP black**

The torques nm[NM] specified in the technical catalogue are to be used as maximum values.

| Dimension | Code | Detail | Weight |
|-----------|----------------|-----------------|--------|
| 40 | 14.045.0040.11 | 40 - MOP 16 bar | 0.82 |

| | Unit | Nominale | Tol+ | Tol- |
|--------|------|----------|------|------|
| da(OD) | mm | 40 | 0.00 | 0.00 |
| b | mm | 17 | 0.75 | 0.75 |
| DN | mm | 32 | 0.00 | 0.00 |
| numb | pc | 4 | 0.00 | 0.00 |
| d | mm | 140 | 1.50 | 1.50 |
| nm | [NM] | 30 | 0.00 | 0.00 |
| d2 | mm | 18 | 0.75 | 0.75 |
| p | bar | 16 | 0.00 | 0.00 |
| K | mm | M16 | 0.00 | 0.00 |
| da | inch | 1,25 | 0.00 | 0.00 |
| k | mm | 100 | 0.75 | 0.75 |