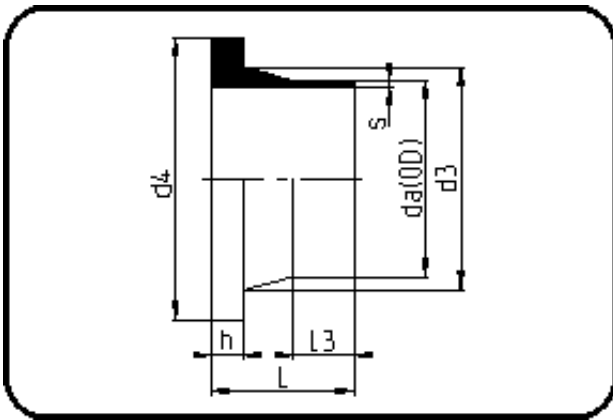


Fittings with short Spigot



Code: 312

- Stub Flange DIN
- short spigot
- machined
- **Butt-welding**
- **PE 100-RC black**

Backing Rings please see Accessories.

Dimension	Code	Detail	Weight
1800	70.312.1800.17	1800X106,6 SDR17 MOP 5,0bar	152.00

	Unit	Nominale	Tol+	Tol-
da(OD)	mm	1.800	10.80	0.00
L	mm	225	5.00	0.00
L3	mm	50	3.00	0.00
s	mm	106,6	10.80	0.00
d3	mm	1.860	0.00	6.00
h	mm	125	7.50	0.00
d4	mm	1.960	0.00	5.00