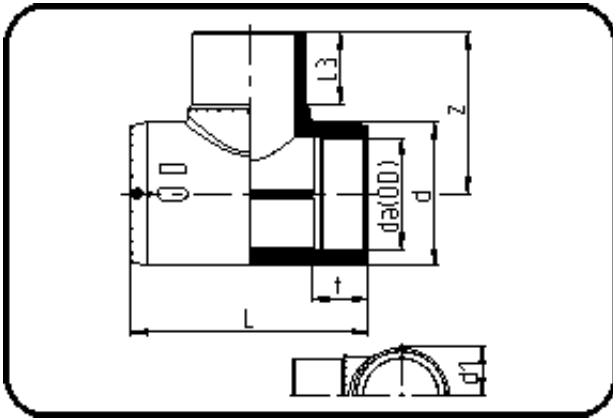


## Electro Fusion Fittings



Code: 176

- E-Tee
- MOP water 16bar/gas 10bar
- W/P-TW
- injection moulded
- **Electro-fusion**
- **PE 100-RC black**

Dimension	Code	Detail	Weight
40	70.176.0040.11	40 SDR 11	0.20

	Unit	Nominale	Tol+	Tol-
da(OD)	mm	40	0.00	0.00
L	mm	139	4.50	0.00
L3	mm	50,5	2.25	2.25
d	mm	57,5	0.75	0.75
d1	mm	47,5	1.50	1.50
t	mm	47,5	1.50	1.50
z	mm	86	1.50	1.50