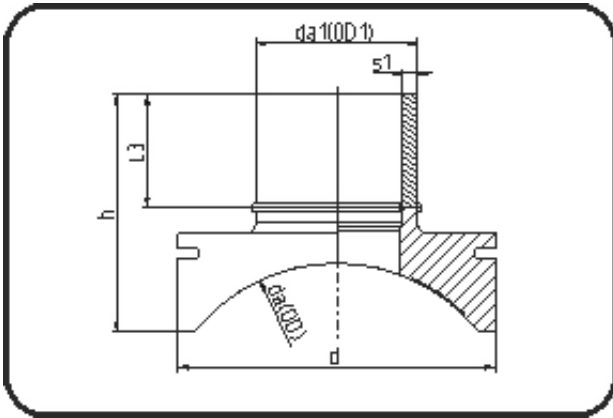


Saddles



Code: 289

- **Spigot saddle System Topload**

- machined
- **Electro-fusion**
- **PE 100-RC black**

Other MOP as well as further dimensions on request. Installation Set please see Welding Technology.

Dimension	Code	Detail	Weight
800/250	70.289.8025.11	800/250 SDR11 MOP 16 bar	10.50

	Unit	Nominale	Tol+	Tol-
da(OD)	mm	800	0.00	0.00
L3	mm	144	15.00	0.00
d	mm	450	1.50	1.50
s1	mm	22,7	2.40	0.00
h	mm	276	15.00	0.00
da(OD1)	mm	250	1.50	0.00