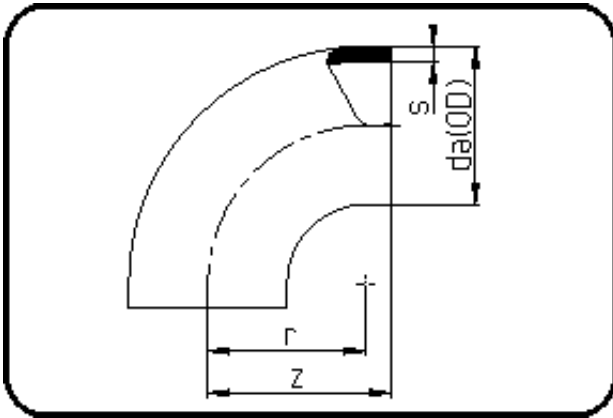


Fittings with short Spigot



Code: 001

- Bend 90°
- short spigot
- injection moulded
- **Butt-welding**
- PE 100-RC black

Dimension	Code	Detail	Weight
140	70.001.0140.17	140X8,3 SDR17 ISO S-8	0.85

	Unit	Nominale	Tol+	Tol-
da(OD)	mm	140	1.30	0.00
r	mm	140	0.00	0.00
s	mm	8,3	1.00	0.00
z	mm	150	4.50	4.50