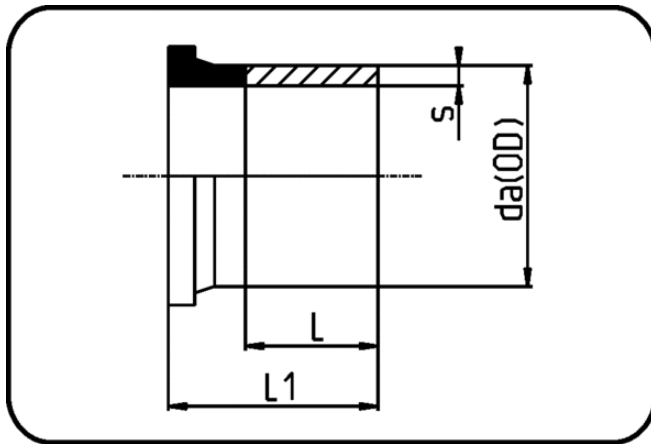


## Elongated Fittings



Code: 012.6

- Stub Flange DIN
- 300mm elongated
- injection moulded+welded
- **Butt + E-socket-welding**
- **PE 100-RC black**

Backing Rings please see Accessories.

Dimension	Code	Detail	da(OD) mm	s mm	L mm	L1 mm	Weight
450	70.012.6450.17	450X26,7 SDR17 ISO S-8	450	26,7	300	470	22.84
500	70.012.6500.17	500X29,7 SDR17 ISO S-8	500	29,7	300	470	26.30
560	70.012.6560.17	560X33,2 SDR17 ISO S-8	560	33,2	300	475	32.98
630	70.012.6630.17	630X37,4 SDR17 ISO S-8	630	37,4	300	480	36.50
710	70.012.6710.17	710X42,1 SDR17 ISO S-8	710	42,1	300	470	46.60
450	70.012.6450.11	450X40,9 SDR11 ISO S-5	450	40,9	300	466	31.80
500	70.012.6500.11	500X45,4 SDR11 ISO S-5	500	45,4	300	475	36.20
560	70.012.6560.11	560X50,8 SDR11 ISO S-5	560	50,8	300	480	47.30
630	70.012.6630.11	630X57,2 SDR11 ISO S-5	630	57,2	300	475	53.00
710	70.012.6710.11	710X64,5 SDR11 ISO S-5	710	64,5	300	470	68.70