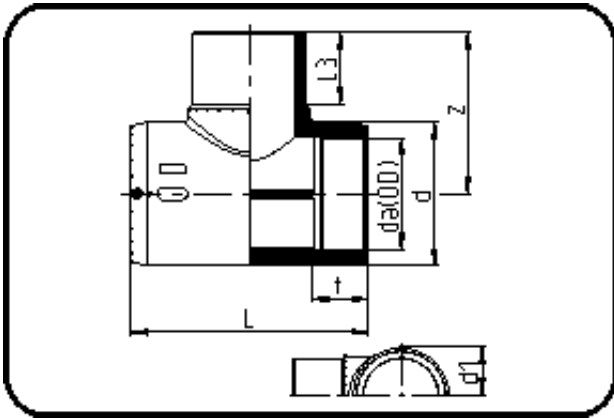


Electro Fusion Fittings



Code: 176

- E-Tee
- MOP water 16bar/gas 10bar
- W/P-TW
- injection moulded
- **Electro-fusion**
- **PE 100-RC black**

Dimension	Code	Detail	Weight
225	70.176.0225.11	225 SDR 17-11	13.00

	Unit	Nominale	Tol+	Tol-
da(OD)	mm	225	1.40	0.00
L	mm	478	7.50	0.00
L3	mm	147	2.25	2.25
d	mm	286	1.50	1.50
d1	mm	150	1.50	1.50
t	mm	110	3.00	3.00
z	mm	323	3.00	3.00