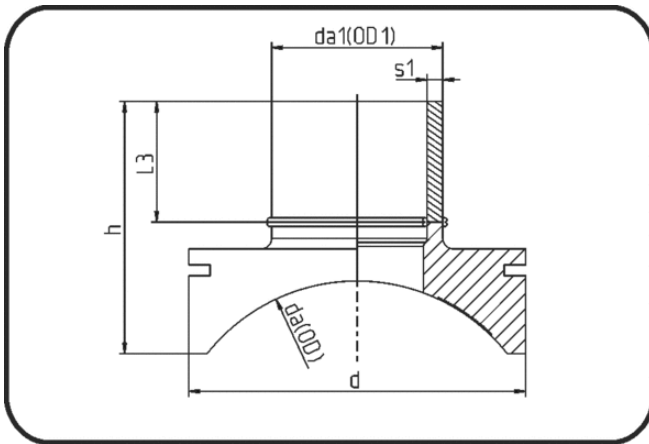


Saddles



Code: 289

- Spigot saddle System Topload

- machined
- Electro-fusion
- PE 100-RC black

Other MOP on request. Installation Set please see Welding Technology.

Dimension	Code	Detail	da(OD) mm	da(OD1) mm	h mm	d mm	s1 mm	L3 mm	Weight
355/125	70.289.3512.11	355/125 SDR11 MOP 16 bar	355	125	209	280	11,4	102	2.98
400/90	70.289.4090.11	400/90 SDR11 MOP 16 bar	400	90	173	200	8,2	94	1.26
400/110	70.289.4011.11	400/110 SDR11 MOP 16 bar	400	110	189	250	10	97	2.20
400/125	70.289.4012.11	400/125 SDR11 MOP 16 bar	400	125	204	280	11,4	102	2.90
450/90	70.289.4590.11	450/90 SDR11 MOP 16 bar	450	90	171	200	8,2	94	1.05
450/110	70.289.4511.11	450/110 SDR11 MOP 16 bar	450	110	186	250	10	97	1.82
450/125	70.289.4512.11	450/125 SDR11 MOP 16 bar	450	125	199	280	11,4	102	3.30
500/90	70.289.5090.11	500/90 SDR11 MOP 16 bar	500	90	168	200	8,2	94	1.22
500/110	70.289.5011.11	500/110 SDR11 MOP 16 bar	500	110	182	250	10	97	2.00
500/125	70.289.5012.11	500/125 SDR11 MOP 16 bar	500	125	195	280	11,4	102	2.74
560/90	70.289.5690.11	560/90 SDR11 MOP 16 bar	560	90	166	200	8,2	94	1.07
560/110	70.289.5611.11	560/110 SDR11 MOP 16 bar	560	110	179	250	10	97	1.81
560/125	70.289.5612.11	560/125 SDR11 MOP 16 bar	560	125	191	280	11,4	102	2.68
630/90	70.289.6390.11	630/90 SDR11 MOP 16 bar	630	90	166	200	8,2	94	1.18
630/110	70.289.6311.11	630/110 SDR11 MOP 16 bar	630	110	176	250	10	97	2.00
630/125	70.289.6312.11	630/125 SDR11 MOP 16 bar	630	125	188	280	11,4	102	2.60