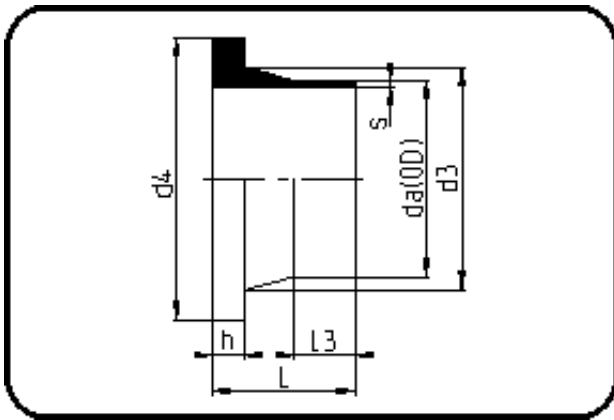


## Fittings with short Spigot



Code: 012

- Stub Flange DIN
- short spigot
- injection moulded
- **Butt-welding**
- **PE 100-RC black**

Backing Rings please see Accessories.

Dimension	Code	Detail	Weight
75	70.012.0075.17	75X4,5 SDR17 ISO S-8	0.18

	Unit	Nominale	Tol+	Tol-
da(OD)	mm	75	0.70	0.00
L	mm	50	3.75	0.00
L3	mm	18	1.50	0.00
s	mm	4,5	0.60	0.00
d3	mm	89	0.00	3.00
h	mm	16	1.50	0.00
d4	mm	122	0.00	1.50