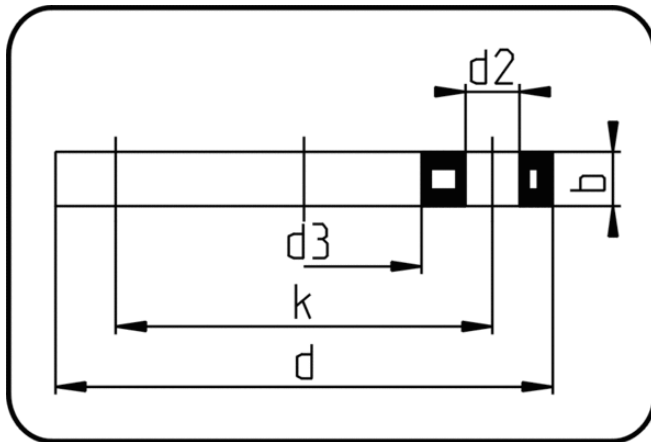


Backing Rings, Accessories



Code: 14.014.1

- Backing Ring DIN
- steel insert/for stub flange
- injection moulded+drilled PN16
- Flange connection
- PP-FRP black

The torques nm[NM] specified in the technical catalogue are to be used as maximum values.

| Dimension | Code | Detail | da(OD) mm | d mm | d2 mm | d3 mm | b mm | k mm | Weight |
|-----------|----------------|------------------|--------------|---------|----------|----------|---------|---------|--------|
| 200 | 14.014.1200.11 | 200 - MOP 16 bar | 200 | 340 | 22 | 235 | 24 | 295 | 3.29 |
| 225 | 14.014.1225.11 | 225 - MOP 16 bar | 225 | 340 | 22 | 238 | 24 | 295 | 3.22 |
| 250 | 14.014.1250.11 | 250 - MOP 16 bar | 250 | 418 | 26 | 288 | 30 | 355 | 6.70 |
| 280 | 14.014.1280.11 | 280 - MOP 16 bar | 280 | 418 | 26 | 294 | 30 | 355 | 6.84 |
| 315 | 14.014.1315.11 | 315 - MOP 16 bar | 315 | 478 | 26 | 338 | 30 | 410 | 8.30 |
| 355 | 14.014.1355.11 | 355 - MOP 16 bar | 355 | 530 | 26 | 376 | 42 | 470 | 16.70 |
| 400 | 14.014.1400.11 | 400 - MOP 16 bar | 400 | 599 | 30 | 430 | 41 | 525 | 17.00 |