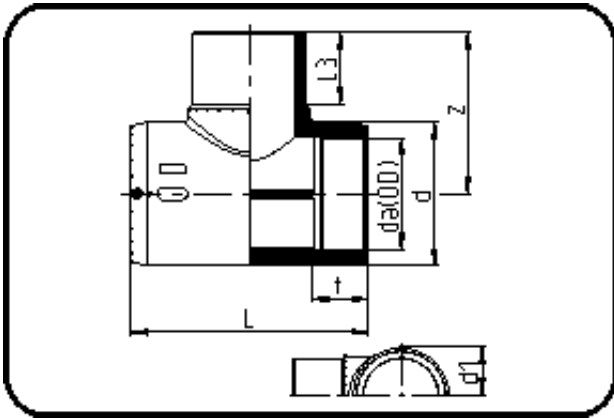


Electro Fusion Fittings



Code: 176

- E-Tee
- MOP water 16bar/gas 10bar
- W/P-TW
- injection moulded
- **Electro-fusion**
- **PE 100-RC black**

Dimension	Code	Detail	Weight
140	70.176.0140.11	140 SDR 17-11	4.60

	Unit	Nominale	Tol+	Tol-
da(OD)	mm	140	0.90	0.00
L	mm	349	6.00	0.00
L3	mm	111	2.25	2.25
d	mm	189	1.50	1.50
d1	mm	98	1.50	1.50
t	mm	88,5	3.00	3.00
z	mm	226,5	2.25	2.25