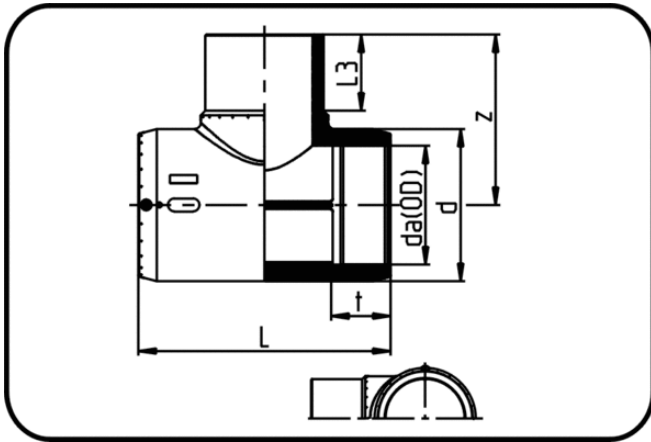


## Electro Fusion Fittings



Code: 176

- **E-Tee**
- MOP water 16bar/gas 10bar
- W/P-TW
- injection moulded
- **Electro-fusion**
- **PE 100-RC black**

Dimension	Code	Detail	da(OD) mm	z mm	L mm	L3 mm	d mm	t mm	Weight
63	70.176.0063.11	63 SDR 17-11	63	117,5	185,5	66	87	62	0.56
75	70.176.0075.11	75 SDR 17-11	75	132	209	71,5	96,5	69	0.65
90	70.176.0090.11	90 SDR 17-11	90	168,5	291,5	91	124	76	1.72
110	70.176.0110.11	110 SDR 17-11	110	191	326,5	101	148,5	71,5	2.63
125	70.176.0125.11	125 SDR 17-11	125	211	347,5	111	170	86	3.77
140	70.176.0140.11	140 SDR 17-11	140	226,5	349	111	189	88,5	4.60
160	70.176.0160.11	160 SDR 17-11	160	246	370,5	120	211,5	85	6.25
180	70.176.0180.11	180 SDR 17-11	180	275	419	130	232	98	8.85
225	70.176.0225.11	225 SDR 17-11	225	323	478	147	286	110	13.00