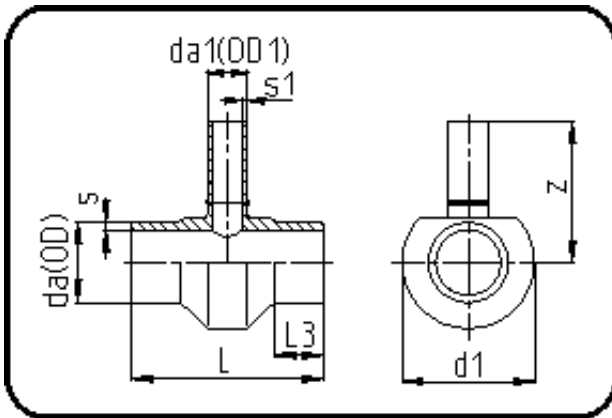


Fittings with short Spigot



Code: 307

- Tee reduced
- short spigot
- machined
- **Butt-welding**
- PE 100-RC black

Dimension	Code	Detail	Weight
250/125	70.307.2512.09	250/125 SDR9 ISO S-4	17.00

	Unit	Nominale	Tol+	Tol-
da(OD)	mm	250	2.30	0.00
L	mm	275	2.00	2.00
L3	mm	50	1.00	1.00
s	mm	27,9	2.90	0.00
d1	mm	325	1.00	1.00
s1	mm	14	1.50	0.00
da(OD1)	mm	125	1.20	0.00
z	mm	250	4.50	4.50