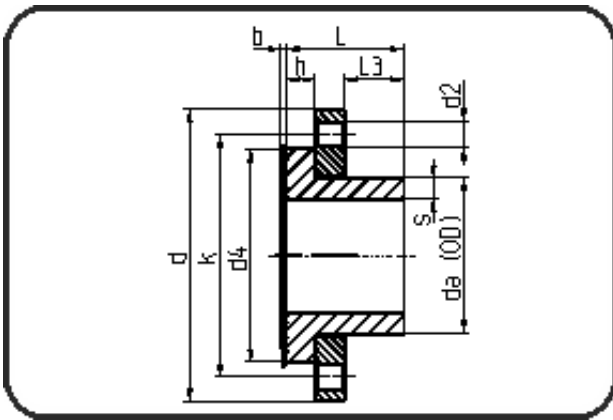


Fittings with short Spigot



Code: 292.0

- High pressure flange DIN PN20
- incl. sealing + backing ring and centerring
- drilled PN25
- **Butt-welding**
- **PE 100-RC black**

Dimension	Code	Detail	Weight
630	70.292.0630.09	630X70 SDR9 ISO S-4	157.00

	Unit	Nominale	Tol+	Tol-
da(OD)	mm	630	5.70	0.00
L	mm	258	0.00	0.00
L3	mm	100	0.00	0.00
b	mm	7	0.00	0.00
s	mm	70,3	4.60	0.00
d	mm	845	0.00	0.00
d2	mm	39	0.00	0.00
h	mm	90	0.00	0.00
d4	mm	726	0.00	0.00
k	mm	770	0.00	0.00