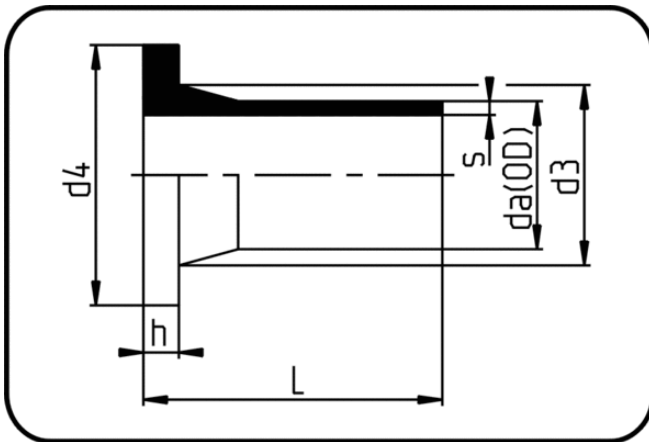


## Elongated Fittings



Code: 062

- **Stub Flange DIN**
- long spigot
- W/P-TW
- injection moulded
- **Butt + E-socket-welding**
- **PE 100-RC black**

Backing Rings please see Accessories.

Dimension	Code	Detail	da(OD) mm	s mm	L mm	d3 mm	d4 mm	h mm	Weight
63	70.062.0063.11	63X5,8 SDR11 PN16	63	5,8	122	75	102	14	0.22
75	70.062.0075.11	75X6,8 SDR11 PN16	75	6,8	125	89	122	16	0.31
90	70.062.0090.11	90X8,2 SDR11 PN16	90	8,2	140	105	138	17	0.46
110	70.062.0110.11	110X10,0 SDR11 PN16	110	10	159	125	158	18	0.71
125	70.062.0125.11	125X11,4 SDR11 PN16	125	11,4	169	132	158	25	0.89
140	70.062.0140.11	140X12,7 SDR11 PN16	140	12,7	188	155	188	25	1.32
160	70.062.0160.11	160X14,6 SDR11 PN16	160	14,6	200	175	212	25	1.77
180	70.062.0180.11	180X16,4 SDR11 PN16	180	16,4	209	183	212	30	2.04
200	70.062.0200.11	200X18,2 SDR11 PN16	200	18,2	210	232	268	32	3.22
225	70.062.0225.11	225X20,5 SDR11 PN16	225	20,5	210	235	268	32	3.32
250	70.062.0250.11	250X22,7 SDR11 PN16	250	22,7	204	285	320	35	4.70
280	70.062.0280.11	280X25,4 SDR11 PN16	280	25,4	218	288	320	35	5.20
315	70.062.0315.11	315X28,6 SDR11 PN16	315	28,6	238	335	370	35	7.58
355	70.062.0355.11	355X32,2 SDR11 PN16	355	32,2	257	373	430	40	10.64
400	70.062.0400.11	400X36,3 SDR11 PN16	400	36,3	274	427	482	46	14.42