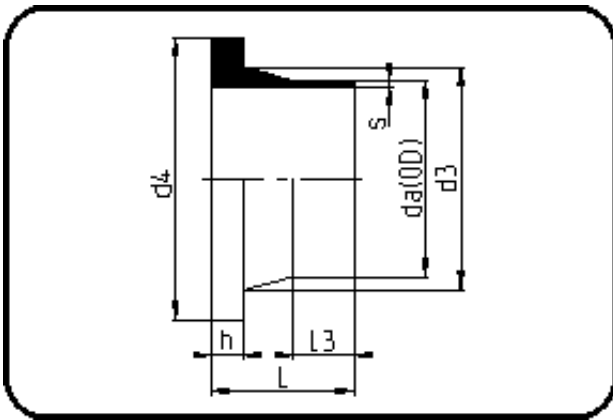


Fittings with short Spigot



Code: 312

- Stub Flange DIN
- short spigot
- machined
- **Butt-welding**
- **PE 100-RC black**

Backing Rings please see Accessories.

Dimension	Code	Detail	Weight
2000	70.312.2000.17	2000X118,5 SDR17 MOP 5,0bar	204.00

	Unit	Nominale	Tol+	Tol-
da(OD)	mm	2.000	12.00	0.00
L	mm	240	5.00	0.00
L3	mm	50	3.00	0.00
s	mm	118,5	12.00	0.00
d3	mm	2.070	0.00	6.00
h	mm	140	7.50	0.00
d4	mm	2.170	0.00	5.00