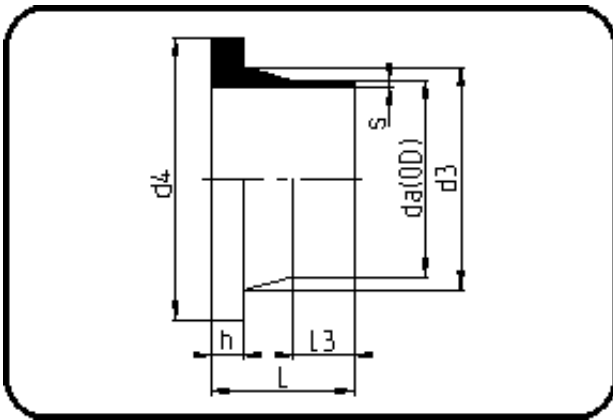


Fittings with short Spigot



Code: 012.1

- Stub Flange ANSI
- short spigot
- injection moulded
- **Butt-welding**
- **PE 100-RC black**

Backing Rings please see Accessories.

Dimension	Code	Detail	Weight
630	70.012.1630.11	630X57,2 SDR11 ISO S-5	22.10

	Unit	Nominale	Tol+	Tol-
da(OD)	mm	630	5.70	0.00
L	mm	175	4.00	0.00
L3	mm	45	2.00	0.00
s	mm	57,2	5.90	0.00
d3	mm	642	0.00	5.00
h	mm	60	1.00	0.00
d4	mm	697	0.00	2.25
da	inch	24	0.00	0.00