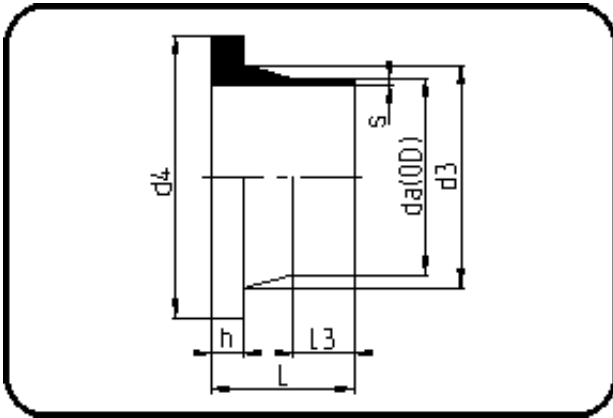


Fittings with short Spigot



Code: 012

- Stub Flange DIN
- short spigot
- injection moulded
- **Butt-welding**
- **PE 100-RC black**

Backing Rings please see Accessories.

Dimension	Code	Detail	Weight
125	70.012.0125.11	125X11,4 SDR11 ISO S-5	0.51

	Unit	Nominale	Tol+	Tol-
da(OD)	mm	125	1.20	0.00
L	mm	80	3.75	0.00
L3	mm	38	1.50	0.00
s	mm	11,4	1.30	0.00
d3	mm	132	0.00	4.50
h	mm	25	1.50	0.00
d4	mm	158	0.00	1.50