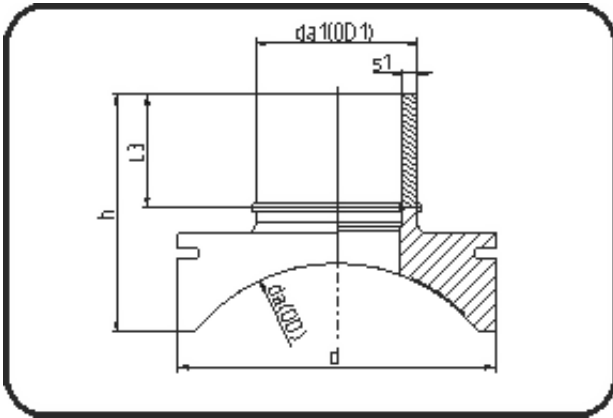


## Saddles



Code: 289

- **Spigot saddle System Topload**

- machined
- **Electro-fusion**
- **PE 100-RC black**

Other MOP on request. Installation Set please see Welding Technology.

Dimension	Code	Detail	Weight
400/90	70.289.4090.11	400/90 SDR11 MOP 16 bar	1.26

	Unit	Nominale	Tol+	Tol-
da(OD)	mm	400	0.00	0.00
L3	mm	94	10.00	0.00
d	mm	200	1.00	1.00
s1	mm	8,2	1.00	0.00
h	mm	173	10.00	0.00
da(OD1)	mm	90	0.60	0.00