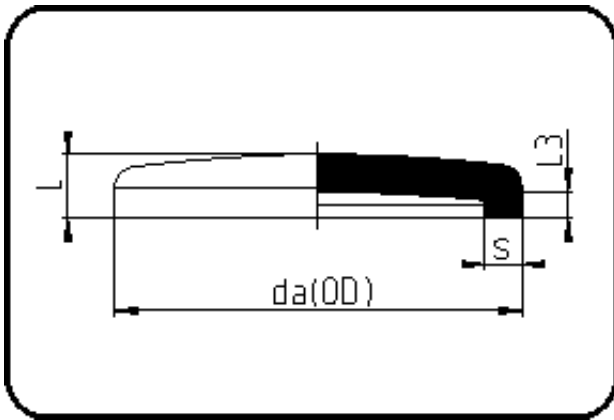


## Fittings with short Spigot



Code: 004

- End Cap
- short spigot
- injection moulded
- **Butt-welding**
- PE 100-RC black

Dimension	Code	Detail	Weight
450	70.004.0450.11	450 X 40,9 SDR11 ISO S-5	11.55

	Unit	Nominale	Tol+	Tol-
da(OD)	mm	450	2.70	0.00
L	mm	140	4.50	4.50
L3	mm	64	0.00	0.00
s	mm	40,9	0.00	0.00