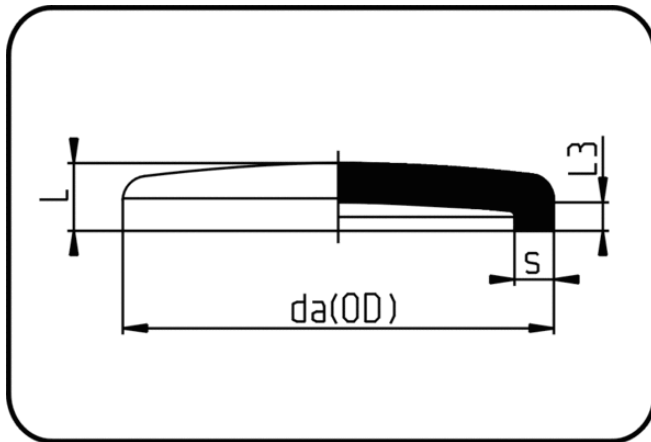


## Fittings with short Spigot



Code: 004

- End Cap
- short spigot
- injection moulded
- **Butt-welding**
- **PE 100-RC black**

| Dimension | Code           | Detail                   | da(OD)<br>mm | s<br>mm | L<br>mm | L3<br>mm | Weight |
|-----------|----------------|--------------------------|--------------|---------|---------|----------|--------|
| 355       | 70.004.0355.11 | 355 X 32,2 SDR11 ISO S-5 | 355          | 32,2    | 124     | 63       | 6.22   |
| 400       | 70.004.0400.11 | 400 X 36,3 SDR11 ISO S-5 | 400          | 36,3    | 133     | 72       | 8.60   |
| 450       | 70.004.0450.11 | 450 X 40,9 SDR11 ISO S-5 | 450          | 40,9    | 140     | 64       | 11.55  |
| 500       | 70.004.0500.11 | 500 X 45,4 SDR11 ISO S-5 | 500          | 45,4    | 148     | 65       | 14.80  |