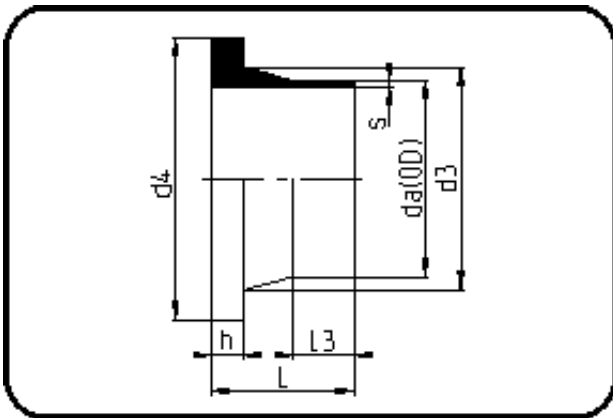


Fittings with short Spigot



Code: 312

- Stub Flange DIN
- short spigot
- machined
- **Butt-welding**
- **PE 100-RC black**

Backing Rings please see Accessories.

Dimension	Code	Detail	Weight
1000	70.312.1000.17	1000X59,3 SDR17 MOP 5,0bar	33.00

	Unit	Nominale	Tol+	Tol-
da(OD)	mm	1.000	6.00	0.00
L	mm	190	9.00	0.00
L3	mm	65	4.50	0.00
s	mm	59,3	6.10	0.00
d3	mm	1.047	0.00	5.00
h	mm	75	2.25	0.00
d4	mm	1.110	0.00	3.00