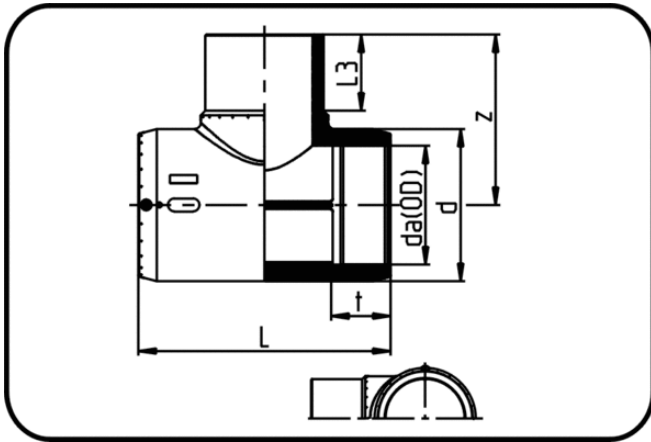


Electro Fusion Fittings



Code: 176

- E-Tee
- MOP water 16bar/gas 10bar
- W/P-TW
- injection moulded
- **Electro-fusion**
- **PE 100-RC black**

Dimension	Code	Detail	da(OD) mm	z mm	L mm	L3 mm	d mm	t mm	Weight
20	70.176.0020.11	20 SDR 11-7,4	20	62	110,5	42,5	32	36	0.07
25	70.176.0025.11	25 SDR 11-7,4	25	66	110,5	42,5	37	39,5	0.08
32	70.176.0032.11	32 SDR 11	32	76	122,5	47	47	43	0.12
40	70.176.0040.11	40 SDR 11	40	86	139	50,5	57,5	47,5	0.20
50	70.176.0050.11	50 SDR 11	50	100	160	58	69	54	0.30
63	70.176.0063.11	63 SDR 17-11	63	117,5	185,5	66	87	62	0.56
75	70.176.0075.11	75 SDR 17-11	75	132	209	71,5	96,5	69	0.65
90	70.176.0090.11	90 SDR 17-11	90	168,5	291,5	91	124	76	1.72
110	70.176.0110.11	110 SDR 17-11	110	191	326,5	101	148,5	71,5	2.63
125	70.176.0125.11	125 SDR 17-11	125	211	347,5	111	170	86	3.77
140	70.176.0140.11	140 SDR 17-11	140	226,5	349	111	189	88,5	4.60
160	70.176.0160.11	160 SDR 17-11	160	246	370,5	120	211,5	85	6.25
180	70.176.0180.11	180 SDR 17-11	180	275	419	130	232	98	8.85
200	70.176.0200.11	200 SDR 17-11	200	302	424,4	138,5	264	105	10.98
225	70.176.0225.11	225 SDR 17-11	225	323	478	147	286	110	13.00