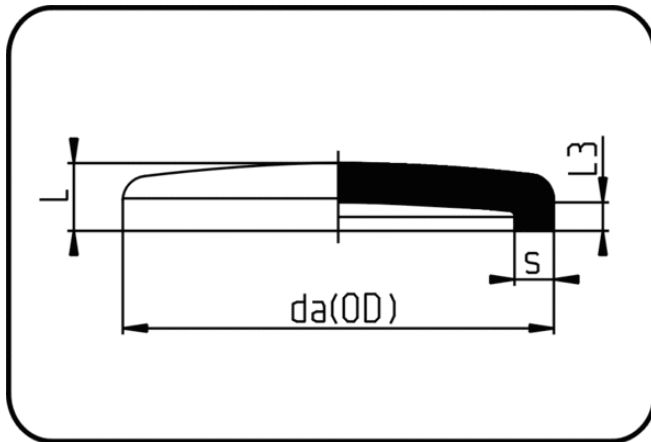


Fittings with short Spigot



Code: 004

- End Cap
- short spigot
- injection moulded
- **Butt-welding**
- **PE 100-RC black**

Dimension	Code	Detail	da(OD) mm	s mm	L mm	L3 mm	Weight
450	70.004.0450.11	450 X 40,9 SDR11 ISO S-5	450	40,9	140	64	11.55
500	70.004.0500.11	500 X 45,4 SDR11 ISO S-5	500	45,4	148	65	14.80