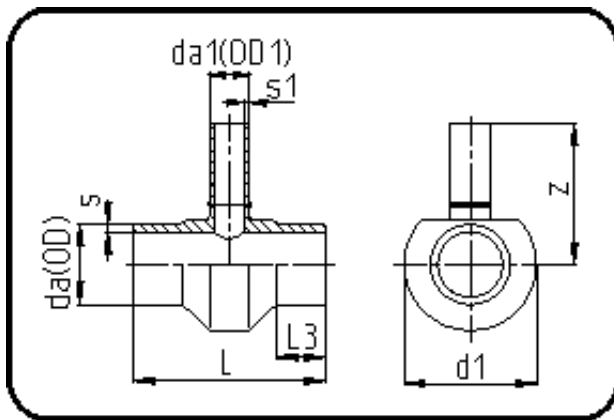


## Fittings with short Spigot



Code: 307

- Tee reduced
- short spigot
- machined
- **Butt-welding**
- **PE 100-RC black**

Dimension	Code	Detail	Weight
280/180	70.307.2818.09	280/180 SDR9 ISO S-4	25.00

	Unit	Nominale	Tol+	Tol-
da(OD)	mm	280	2.60	0.00
L	mm	330	2.00	2.00
L3	mm	50	1.00	1.00
s	mm	31,3	3.30	0.00
d1	mm	376	1.00	1.00
s1	mm	20,1	2.20	0.00
da(OD1)	mm	180	1.70	0.00
z	mm	315	4.50	4.50