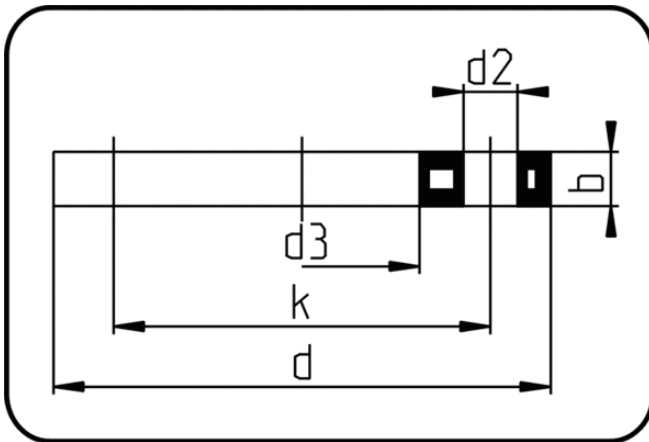


Backing Rings, Accessories



Code: 013

- Backing Ring ANSI
- steel insert
- injection moulded
- **Flange connection**
- **PP-FRP black**

The torques nm[NM] specified in the technical catalogue are to be used as maximum values.

Dimension	Code	Detail	da(OD) mm	d mm	d2 mm	d3 mm	b mm	k mm	Weight
63	14.013.0063.11	63 - 2" - MOP 16 bar	63	162	20	78	18	120,65	0.83
75	14.013.0075.11	75 - 2 1/2" - MOP 16 bar	75	184	20	92	18	139,7	1.07
90	14.013.0090.11	90 - 3" - MOP 16 bar	90	194	20	111	18	152,4	1.10
110/125	14.013.0110.11	110/125 - 4" - MOP 16 bar	110	229	20	133	18	190,5	1.56
140	14.013.0140.11	140 - 5" - MOP 16 bar	140	258	22	158	24	215,9	2.25
160	14.013.0160.11	160 - 6" - MOP 16 bar	160	283	22	178	24	241,3	2.38
200/225	14.013.0200.11	200/225 - 8" - MOP 16 bar	200	345	22	236	24	298,45	3.90
250/280	14.013.0250.11	250/280 - 10" - MOP 16 bar	250	412	25	288	26	361,95	6.09
315	14.013.0315.11	315 - 12" - MOP 16 bar	315	487	25	338	32	431,8	13.00
355	14.013.0355.11	355 - 14" - MOP 16 bar	355	536	29	376	42	476,3	17.17
400	14.013.0400.11	400 - 16" - MOP 16 bar	400	602	29	430	46	539,8	21.20
450/500	14.013.0500.11	450/500 - 20" - MOP 16 bar	500	700	32	533	45	635	27.88
560	14.013.0560.11	560 - 22" - MOP 16 bar	560	789	35	618	50	692,15	37.80
630	14.013.0630.11	630 - 24" - MOP 16 bar	630	821	35	645	50	749,3	38.80