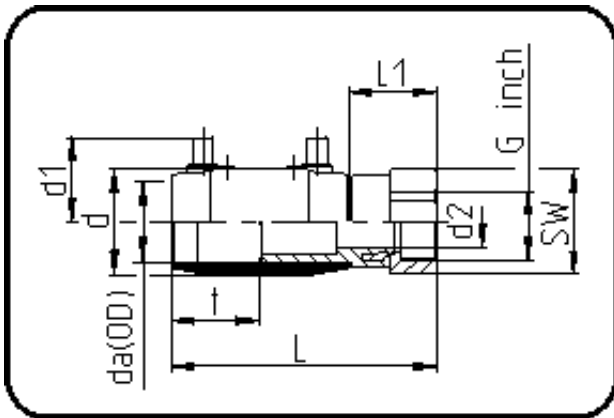


Electro Fusion Fittings



Code: 184

- **E-Adaptor Socket**
- with brass-female thread
- W/P-TW
- injection moulded
- **Electro-fusion**
- **PE 100-RC black**

Dimension	Code	Detail	Weight
40 X 1 1/4	70.184.4040.11	40X1 1/4" SDR 17-11 PN16	0.38

	Unit	Nominale	Tol+	Tol-
da(OD)	mm	40	0.00	0.00
L	mm	148	3.75	3.75
L1	mm	49	1.50	1.50
SW	mm	50	0.00	0.00
G	inch	1,25	0.00	0.00
d	mm	53	0.75	0.75
d1	mm	44	1.50	1.50
t	mm	49	0.00	0.90
E	mm	41,91	0.00	0.00
d2	mm	27,5	0.00	0.00
K	mm	38,95	0.00	0.00