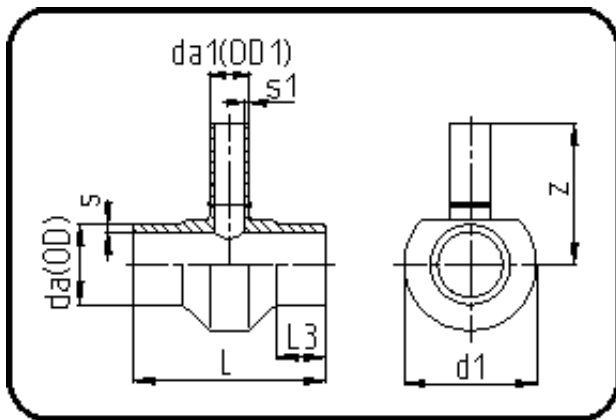


## Fittings with short Spigot



Code: 307

- Tee reduced
- short spigot
- machined
- **Butt-welding**
- **PE 100-RC black**

Dimension	Code	Detail	Weight
355/63	70.307.3563.09	355/63 SDR9 ISO S-4	27.80

	Unit	Nominale	Tol+	Tol-
da(OD)	mm	355	3.20	0.00
L	mm	263	3.00	3.00
L3	mm	75	1.50	1.50
s	mm	39,7	4.10	0.00
d1	mm	410	1.50	1.50
s1	mm	7,1	0.90	0.00
da(OD1)	mm	63	0.60	0.00
z	mm	302,5	15.00	15.00