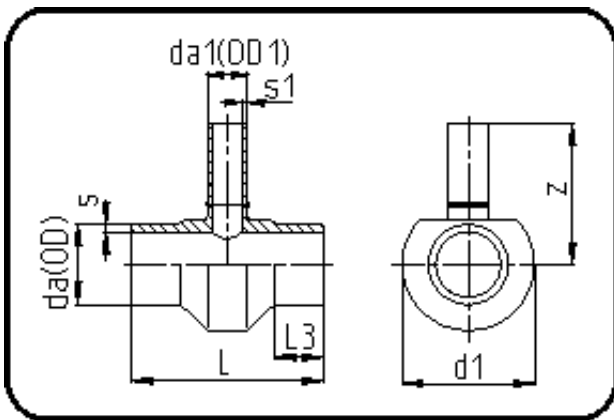


Fittings with short Spigot



Code: 307

- Tee reduced
- short spigot
- machined
- **Butt-welding**
- PE 100-RC black

Dimension	Code	Detail	Weight
630/225	70.307.6322.09	630/225 SDR9 ISO S-4	77.10

	Unit	Nominale	Tol+	Tol-
da(OD)	mm	630	5.70	0.00
L	mm	590	2.00	2.00
L3	mm	150	1.00	1.00
s	mm	70,3	1.70	0.00
d1	mm	700	1.00	1.00
s1	mm	25,2	2.70	0.00
da(OD1)	mm	225	2.10	0.00
z	mm	500	15.00	15.00