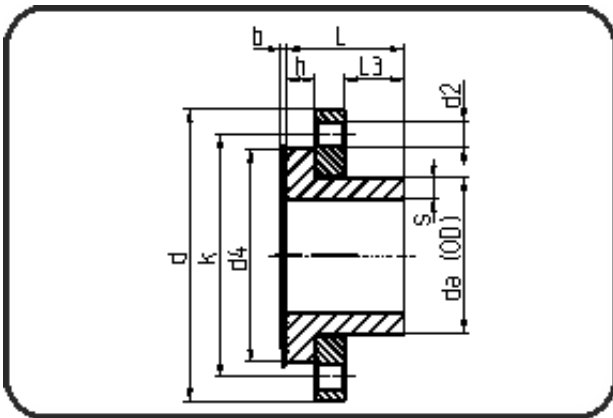


Fittings with short Spigot



Code: 292.0

- High pressure flange DIN PN20
- incl. sealing + backing ring and centerring
- drilled PN25
- **Butt-welding**
- **PE 100-RC black**

Dimension	Code	Detail	Weight
315	70.292.0315.09	315X35,2 SDR9 ISO S-4	36.21

	Unit	Nominale	Tol+	Tol-
da(OD)	mm	315	2.90	0.00
L	mm	195	0.00	0.00
L3	mm	100	0.00	0.00
b	mm	6	0.00	0.00
s	mm	35,2	3.70	0.00
d	mm	485	0.00	0.00
d2	mm	30	0.00	0.00
h	mm	57	0.00	0.00
d4	mm	395	0.00	0.00
k	mm	430	0.00	0.00