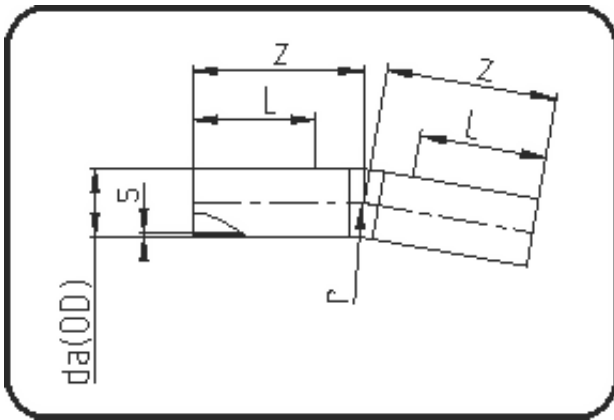


## Sweep Bends



Code: 394

- Sweep Bend 11°
- radius 1.5 x OD
- formed out of pipe
- **Butt + E-socket-welding**
- **PE 100-RC black**

Dimension	Code	Detail	Weight
90	70.394.0090.11	90 SDR11 ISO S-5 16 bar	1.42

	Unit	Nominale	Tol+	Tol-
da(OD)	mm	90	0.00	0.00
L	mm	150	0.00	0.00
r	mm	135	0.00	0.00
s	mm	8,2	0.00	0.00
z	mm	350	75.00	75.00