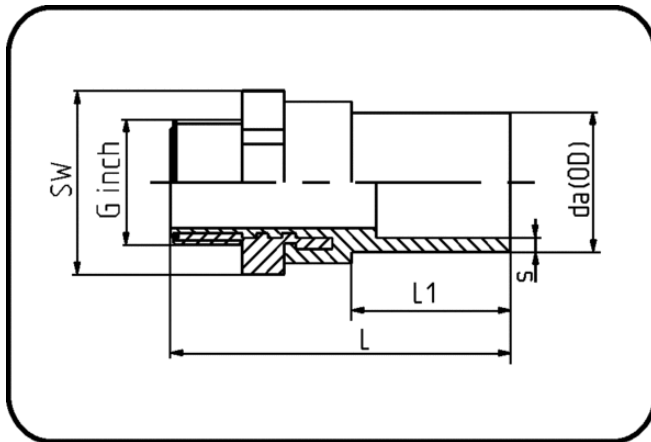


Electro Fusion Fittings



Code: 181

- Brass-R-male thread
- for E-Adaptor
- W/P-TW
- injection moulded
- **Electro-fusion**
- **PE 100-RC black**

Dimension	Code	Detail	da(OD) mm	s mm	L mm	L1 mm	SW mm	G inch	Weight
20 X 1/2	70.181.0020.11	20X1/2" SDR 11 PN16	20	3	81	40	32	0,5	0.10
25 X 3/4	70.181.0025.11	25X3/4" SDR 11 PN16	25	3	85	43	36	0,75	0.13
32 X 1/2	70.181.2032.11	32X1/2" SDR 11 PN16	32	3	88	46	41	0,5	0.20
32 X 3/4	70.181.2532.11	32X3/4" SDR 11 PN16	32	3	90	46	41	0,75	0.19
32 X 1	70.181.0032.11	32X1" SDR 11 PN16	32	3	92	46	41	1	0.18
32 X 1 1/4	70.181.4032.11	32X1 1/4" SDR 11 PN16	32	3	95	46	41	1,25	0.30
32 X 1 1/2	70.181.5032.11	32X1 1/2" SDR 11 PN16	32	3	97	46	41	1,5	0.48
40 X 1	70.181.3240.11	40X1" SDR 11 PN16	40	3,7	99	51	50	1,00	0.29
40 X 1 1/4	70.181.0040.11	40X1 1/4" SDR 17-11 PN16	40	3,7	100	51	50	1,25	0.27
40 X 1 1/2	70.181.5040.11	40X1 1/2" SDR 17-11 PN16	40	3,7	103	51	50	1,5	0.40
40 X 2	70.181.6340.11	40X2" SDR 11 PN16	40	3,7	107	51	50	2	0.76
50 X 1	70.181.3250.11	50X1" SDR 11 PN16	50	4,6	105	57	60	1	0.44
50 X 1 1/4	70.181.4050.11	50X1 1/4" SDR 11 PN16	50	4,6	107	57	60	1,25	0.42
50 X 1 1/2	70.181.0050.11	50X1 1/2" SDR 17-11 PN16	50	4,6	109	57	60	1,5	0.38
50 X 2	70.181.6350.11	50X2" SDR 11 PN16	50	4,6	114	57	60	2	0.68
63 X 1 1/4	70.181.4063.11	63X1 1/4" SDR 11 PN16	63	5,8	117	65	70	1,25	0.63
63 X 1 1/2	70.181.5063.11	63X1 1/2" SDR 11 PN16	63	5,8	121	65	70	1,5	0.57
63 X 2	70.181.0063.11	63X2" SDR 17-11 PN16	63	5,8	124	65	70	2	0.57