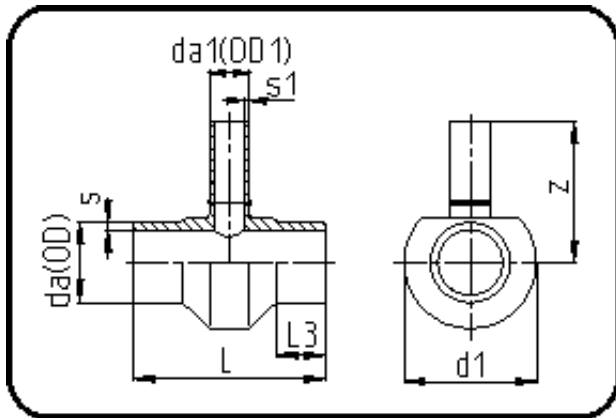


Fittings with short Spigot



Code: 307

- Tee reduced
- short spigot
- machined
- **Butt-welding**
- **PE 100-RC black**

Dimension	Code	Detail	Weight
630/200	70.307.6320.09	630/200 SDR9 ISO S-4	72.00

	Unit	Nominale	Tol+	Tol-
da(OD)	mm	630	5.70	0.00
L	mm	555	7.50	7.50
L3	mm	150	3.00	3.00
s	mm	70,3	7.20	0.00
d1	mm	680	3.00	3.00
s1	mm	22,4	2.40	0.00
da(OD1)	mm	200	1.80	0.00
z	mm	540	18.00	18.00