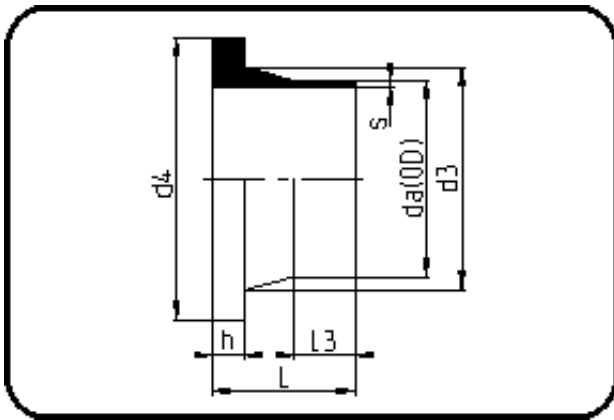


## Fittings with short Spigot



Code: 312

- Stub Flange DIN
- short spigot
- machined
- **Butt-welding**
- **PE 100-RC black**

Backing Rings please see Accessories.

Dimension	Code	Detail	Weight
2000	70.312.2000.33	2000X61,2 SDR33 MOP 2,5bar	161.00

	Unit	Nominale	Tol+	Tol-
da(OD)	mm	2.000	12.00	0.00
L	mm	230	5.00	0.00
L3	mm	50	3.00	0.00
s	mm	61,2	6.30	0.00
d3	mm	2.070	0.00	6.00
h	mm	130	7.50	0.00
d4	mm	2.170	0.00	5.00