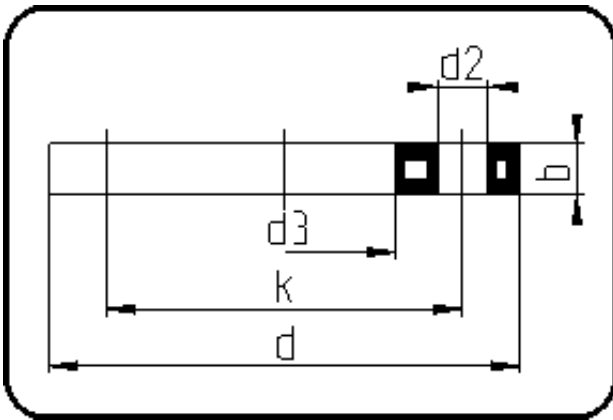


Backing Rings, Accessories



Code: 14.014.1

- Backing Ring DIN
- steel insert/for stub flange
- injection moulded+drilled PN16
- **Flange connection**
- **PP-FRP black**

The torques nm[NM] specified in the technical catalogue are to be used as maximum values.

Dimension	Code	Detail	Weight
400	14.014.1400.11	400 - MOP 16 bar	17.00

	Unit	Nominale	Tol+	Tol-
da(OD)	mm	400	0.00	0.00
b	mm	41	1.50	1.50
DN	mm	400	0.00	0.00
numb	pc	16	0.00	0.00
d	mm	599	1.50	0.00
d3	mm	430	2.25	0.00
nm	[NM]	170	0.00	0.00
d2	mm	30	0.75	0.75
p	bar	16	0.00	0.00
K	mm	M27	0.00	0.00
k	mm	525	0.75	0.75