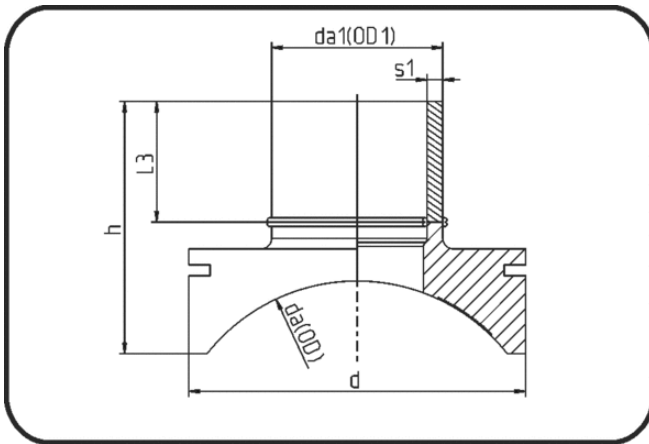


## Saddles



Code: 289

- Spigot saddle System Topload

- machined
- Electro-fusion
- PE 100-RC black

Other MOP on request. Installation Set please see Welding Technology.

Dimension	Code	Detail	da(OD) mm	da(OD1) mm	h mm	d mm	s1 mm	L3 mm	Weight
355/90	70.289.3590.09	355/90 SDR9 MOP 16 bar	355	90	176	200	10,1	94	1.27
355/110	70.289.3511.09	355/110 SDR9 MOP 16 bar	355	110	194	250	12,3	97	2.16
355/125	70.289.3512.09	355/125 SDR9 MOP 16 bar	355	125	209	280	14	102	2.99
400/90	70.289.4090.09	400/90 SDR9 MOP 16 bar	400	90	173	200	10,1	94	1.25
400/110	70.289.4011.09	400/110 SDR9 MOP 16 bar	400	110	189	250	12,3	97	2.09
400/125	70.289.4012.09	400/125 SDR9 MOP 16 bar	400	125	204	280	14	102	2.87
450/90	70.289.4590.09	450/90 SDR9 MOP 16 bar	450	90	171	200	10,1	94	1.22
450/110	70.289.4511.09	450/110 SDR9 MOP 16 bar	450	110	186	250	12,3	97	2.04
450/125	70.289.4512.09	450/125 SDR9 MOP 16 bar	450	125	199	280	14	102	3.31
500/90	70.289.5090.09	500/90 SDR9 MOP 16 bar	500	90	168	200	10,1	94	1.21
500/110	70.289.5011.09	500/110 SDR9 MOP 16 bar	500	110	182	250	12,3	97	1.99
500/125	70.289.5012.09	500/125 SDR9 MOP 16 bar	500	125	195	280	14	102	2.71
560/90	70.289.5690.09	560/90 SDR9 MOP 16 bar	560	90	168	200	10,1	94	1.13
560/110	70.289.5611.09	560/110 SDR9 MOP 16 bar	560	110	182	250	12,3	97	1.87
560/125	70.289.5612.09	560/125 SDR9 MOP 16 bar	560	125	195	280	14	102	2.76
630/90	70.289.6390.09	630/90 SDR9 MOP 16 bar	630	90	166	200	10,1	94	1.23
630/110	70.289.6311.09	630/110 SDR9 MOP 16 bar	630	110	176	250	12,3	97	2.04
630/125	70.289.6312.09	630/125 SDR9 MOP 16 bar	630	125	188	280	14	102	2.68