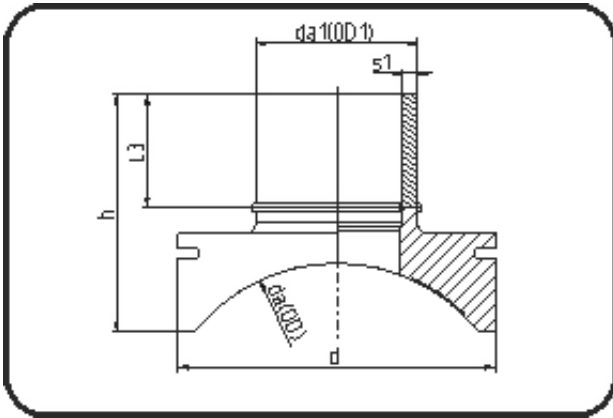


Saddles



Code: 289

- **Spigot saddle System Topload**

- machined
- **Electro-fusion**
- **PE 100-RC black**

Other MOP as well as further dimensions on request. Installation Set please see Welding Technology.

Dimension	Code	Detail	Weight
630/315	70.289.6331.11	630/315 SDR11 MOP 16 bar	21.00

	Unit	Nominale	Tol+	Tol-
da(OD)	mm	630	0.00	0.00
L3	mm	165	15.00	0.00
d	mm	560	1.50	1.50
s1	mm	28,6	3.00	0.00
h	mm	346	15.00	0.00
da(OD1)	mm	315	1.90	0.00