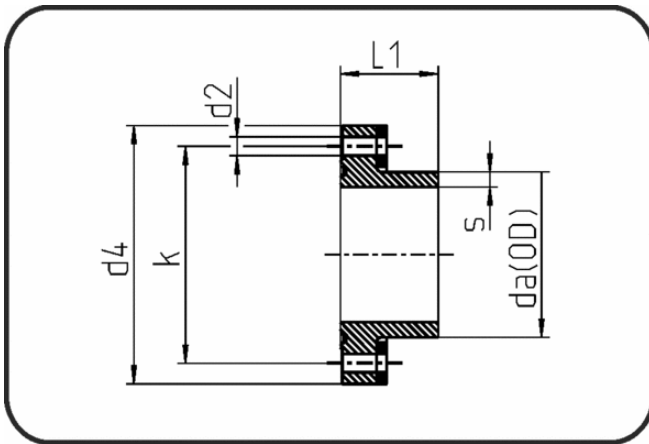


## Fittings with short Spigot



Code: 362

- **Special Flange DIN short**
- hot-dip galvan. backing ring
- and EPDM O-ring
- machined/drilled PN16
- **Butt-welding**
- **PE 100-RC black**

Dimension	Code	Detail	da(OD) mm	s mm	L mm	d2 mm	k mm	d4 mm	Weight
250/DN200	70.362.0250.11	250X22,7 SDR11 / DN200	250	22,7	110	22	295	340	7.75
315/DN250	70.362.0315.11	315X28,6 SDR11 / DN250	315	28,6	135	26	355	405	12.00
355/DN300	70.362.0355.11	355X32,2 SDR11 / DN300	355	32,2	175	26	410	460	20.20
400/DN350	70.362.0400.11	400X36,3 SDR11 / DN350	400	36,3	181	26	470	520	26.70
450/DN400	70.362.0450.11	450X40,9 SDR11 / DN400	450	40,9	200	30	525	580	37.70
560/DN500	70.362.0560.11	560X50,8 SDR11 / DN500	560	50,8	205	33	650	715	44.70