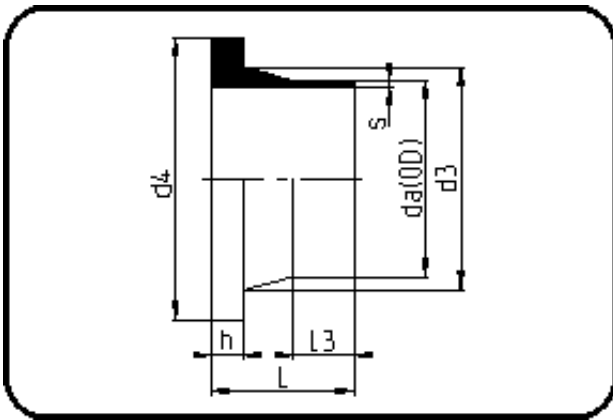


Fittings with short Spigot



Code: 312

- Stub Flange DIN
- short spigot
- machined
- **Butt-welding**
- **PE 100-RC black**

Backing Rings please see Accessories.

Dimension	Code	Detail	Weight
1400	70.312.1400.41	1400X34,3 SDR41 MOP 2,0bar	51.00

	Unit	Nominale	Tol+	Tol-
da(OD)	mm	1.400	8.40	0.00
L	mm	180	4.00	0.00
L3	mm	40	2.00	0.00
s	mm	34,3	3.60	0.00
d3	mm	1.425	0.00	6.00
h	mm	80	1.00	0.00
d4	mm	1.535	0.00	4.00