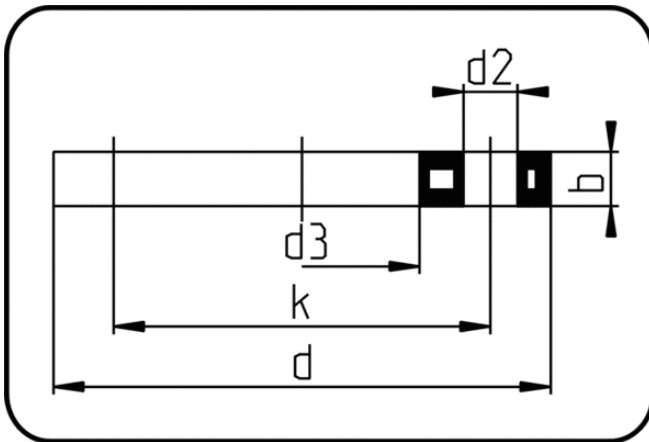


Backing Rings, Accessories



Code: 14.014

- Backing Ring DIN
- steel insert/for stub flange
- injection moulded+drilled PN10
- Flange connection
- PP-FRP black

The torques nm[NM] specified in the technical catalogue are to be used as maximum values.

Dimension	Code	Detail	da(OD) mm	d mm	d2 mm	d3 mm	b mm	k mm	Weight
200	14.014.0200.11	200 - MOP 16 bar	200	340	22	235	25	295	3.47
225	14.014.0225.11	225 - MOP 16 bar	225	340	22	238	25	295	3.43
250	14.014.0250.11	250 - MOP 16 bar	250	409	22	288	30	350	6.27
280	14.014.0280.11	280 - MOP 16 bar	280	409	22	294	30	350	6.29
315	14.014.0315.11	315 - MOP 16 bar	315	463	23	338	34	400	9.62
355	14.014.0355.11	355 - MOP 16 bar	355	515	22,5	376	42	460	14.45
400	14.014.0400.11	400 - MOP 16 bar	400	574	26	430	46	515	17.20
450	14.014.0450.11	450/DN500 - MOP 16 bar	450	678	26	517	45	620	24.96
500	14.014.0500.11	500 - MOP 16 bar	500	678	26	533	45	620	24.20
560	14.014.0560.11	560 - MOP 10 bar	560	789	30	618	50	725	33.40
630	14.014.0630.11	630 - MOP 10 bar	630	789	30	645	50	725	31.84