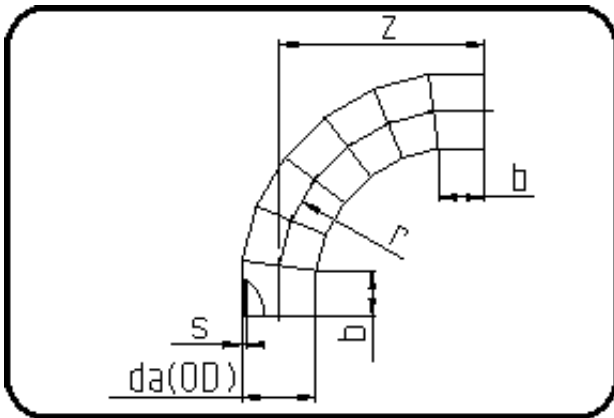


## Segmented Fittings



Code: 328

- Bend 90°
- 7 segments
- full pressure rated
- segmented
- **Butt + E-socket-welding**
- **PE 100-RC black**

Dimension	Code	Detail	Weight
355	70.328.0355.09	355x39,7 SDR9 ISO S-4	93.60

	Unit	Nominale	Tol+	Tol-
da(OD)	mm	355	0.00	0.00
b	mm	300	0.00	0.00
r	mm	1.127	0.00	0.00
s	mm	39,7	0.00	0.00
t	mm	343	0.00	0.00
t1	mm	250	0.00	0.00
t2	mm	347	0.00	0.00
z	mm	1.302	42.00	42.00