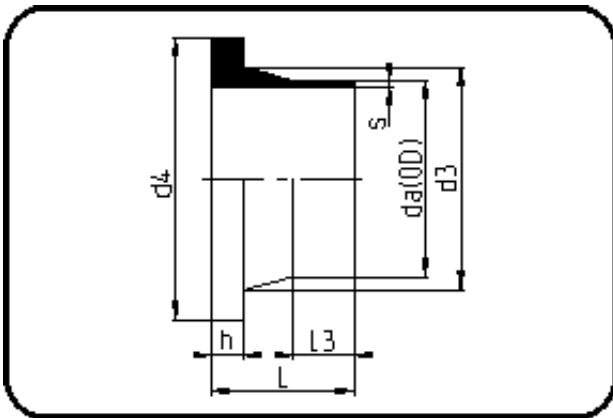


Fittings with short Spigot



Code: 012.1

- Stub Flange ANSI
- short spigot
- injection moulded
- **Butt-welding**
- **PE 100-RC black**

Backing Rings please see Accessories.

Dimension	Code	Detail	Weight
355	70.012.1355.11	355X32,2 SDR11 ISO S-5	7.00

	Unit	Nominale	Tol+	Tol-
da(OD)	mm	355	3.20	0.00
L	mm	150	6.00	0.00
L3	mm	70	3.00	0.00
s	mm	32,2	3.40	0.00
d3	mm	373	0.00	7.50
h	mm	40	1.50	0.00
d4	mm	436	0.00	2.25
da	inch	14	0.00	0.00