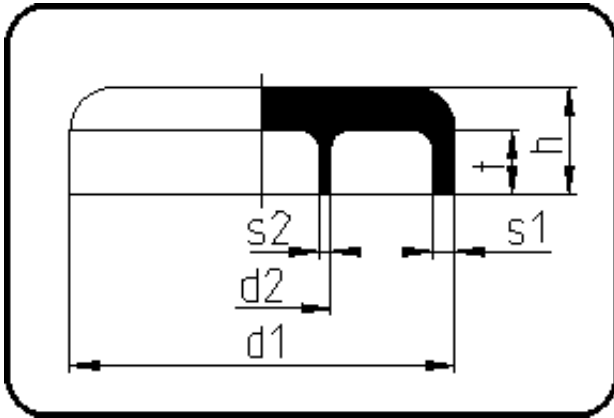


PP/PP Simultaneous Welding



Code: 154

- End Cap
- machined
- Simultaneous-welding
- PP/PP

Dimension	Code	Detail	Weight
315/200	80.154.3120.31	315/200 SDR33/11	3.60

	Unit	Nominale	Tol+	Tol-
d1	mm	315	4.35	0.00
SDR2		11	0.00	0.00
t	mm	15	0.75	0.75
SDR1		33	0.00	0.00
s2	mm	18,2	2.10	0.00
d2	mm	200	2.70	0.00
s1	mm	9,7	1.20	0.00
h	mm	60	1.50	1.50