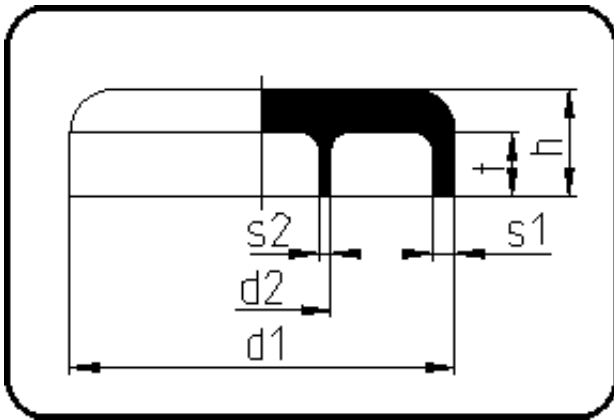


## PP/PP Simultaneous Welding



Code: 154

- End Cap
- machined
- Simultaneous-welding
- PP/PP

Dimension	Code	Detail	Weight
355/250	80.154.3525.31	355/250 SDR33/11	4.62

	Unit	Nominale	Tol+	Tol-
d1	mm	355	4.80	0.00
SDR2		11	0.00	0.00
t	mm	15	0.75	0.75
SDR1		33	0.00	0.00
s2	mm	22,8	2.50	0.00
d2	mm	250	3.45	0.00
s1	mm	10,9	1.30	0.00
h	mm	60	1.50	1.50