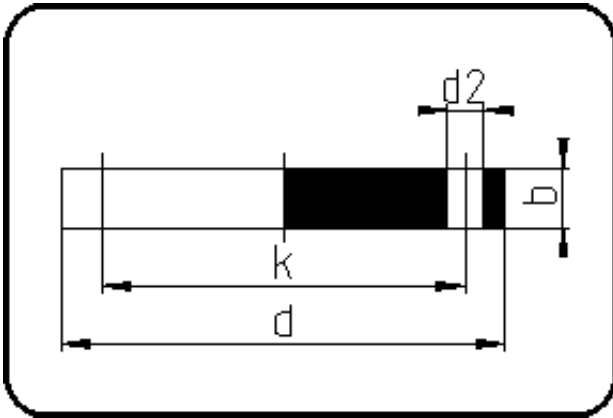


Backing Rings, Accessories



Code: 12.334

- Blind Flange no steel insert
- DIN/pressureless applications
- machined/drilled PN10
- **Flange connection**
- PPH grey

Dimension	Code	Detail	Weight
1000	12.334.1000.00	1000	65.00

	Unit	Nominale	Tol+	Tol-
da(OD)	mm	1.000	0.00	0.00
b	mm	60	0.75	0.75
DN	mm	1.000	0.00	0.00
numb	pc	28	0.00	0.00
d	mm	1.230	1.50	1.50
d2	mm	36	0.75	0.75
K	mm	M33	0.00	0.00
k	mm	1.160	0.75	0.75