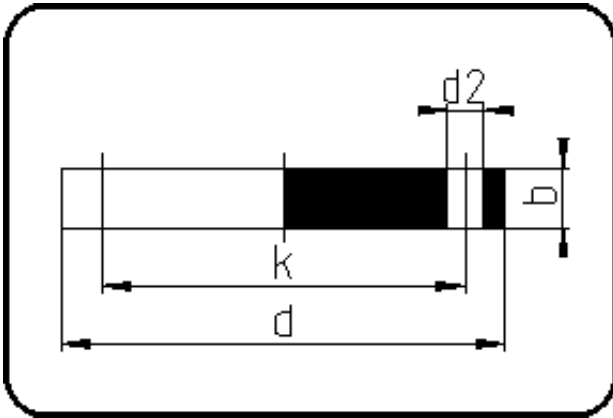


Backing Rings, Accessories



Code: 12.334

- Blind Flange no steel insert
- DIN/pressureless applications
- machined/drilled PN10
- **Flange connection**
- PPH grey

Dimension	Code	Detail	Weight
250/280	12.334.0250.00	250/280	4.00

	Unit	Nominale	Tol+	Tol-
da(OD)	mm	250	0.00	0.00
b	mm	35	0.75	0.75
DN	mm	250	0.00	0.00
numb	pc	12	0.00	0.00
d	mm	409	1.50	1.50
d2	mm	22	0.75	0.75
K	mm	M20	0.00	0.00
k	mm	350	0.75	0.75