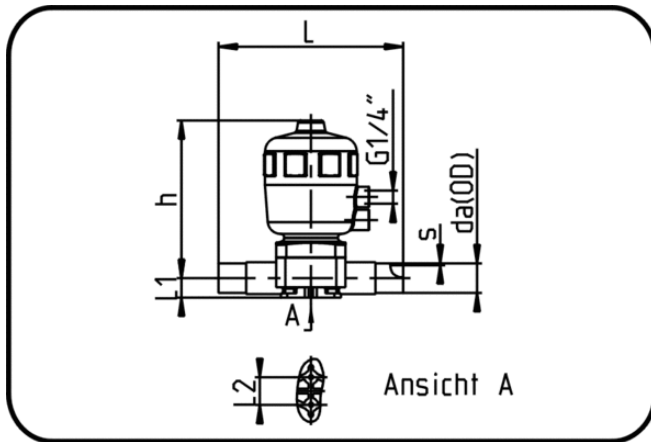


## Valves



Code: 341.0

- Diaphragm Valve Pneumatic
- closed by resilience
- EPDM/PTFE diaphragm
- **Butt + IR + HPF-welding**
- **PVDF UHP natural**

| Dimension | Code           | Detail                | da(OD)<br>mm | s<br>mm | L<br>mm | L1<br>mm | L2<br>mm | h<br>mm | Weight |
|-----------|----------------|-----------------------|--------------|---------|---------|----------|----------|---------|--------|
| 20        | 35.341.0020.21 | 20 - SDR21 MOP 10 bar | 20           | 1,9     | 133     | 16,5     | 24,5     | 170     | 1.48   |
| 25        | 35.341.0025.21 | 25 - SDR21 MOP 10 bar | 25           | 1,9     | 144     | 16,5     | 24,5     | 170     | 1.48   |
| 32        | 35.341.0032.21 | 32 - SDR21 MOP 10 bar | 32           | 2,4     | 154     | 20,5     | 24,5     | 175     | 1.88   |
| 40        | 35.341.0040.21 | 40 - SDR21 MOP 10 bar | 40           | 2,4     | 193     | 25,5     | 44       | 273     | 5.56   |
| 50        | 35.341.0050.21 | 50 - SDR21 MOP 10 bar | 50           | 3       | 194     | 32       | 44       | 273     | 6.40   |
| 63        | 35.341.0063.21 | 63 - SDR21 MOP 10 bar | 63           | 3       | 224     | 38,5     | 44       | 277     | 6.91   |